

# Assima Train vs. Traditional SAP Training

## What's the Difference?

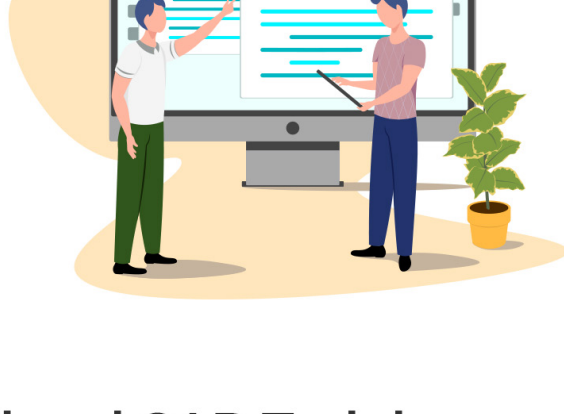
### The SAP Training Challenge



Is your SAP training setting your team up for success or failure?

Traditional SAP training methods rely on static materials like PDF's and videos. Both when it's time to apply the knowledge, employees struggle. Assima Train changes the game with hands-on, interactive simulations that look, feel and act like the real thing, leading to accelerated learning, improve retention, and reduce costly mistakes.

### Why Traditional SAP Training Falls Short?



#### Common Challenges of Traditional SAP Training



#### The Solution: Assima Train



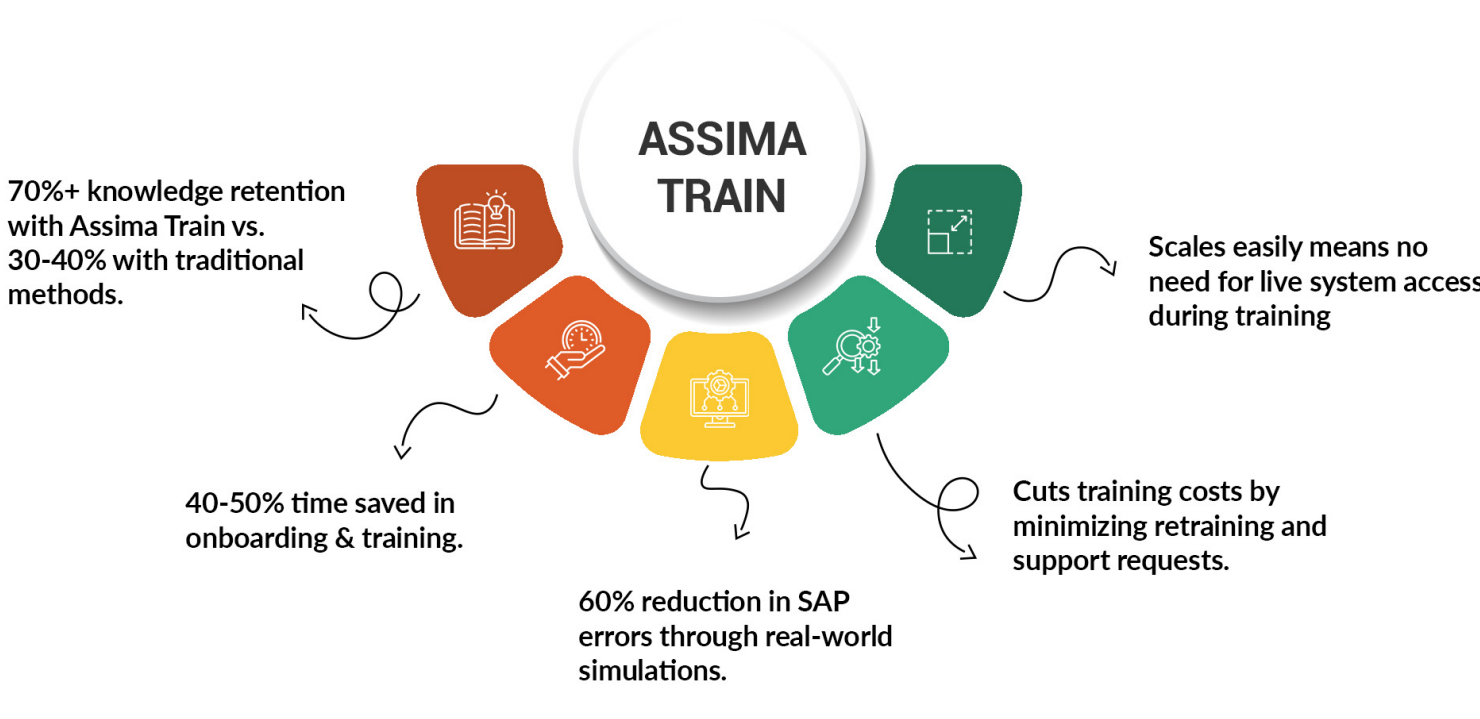
#### What's the Difference?

Assima Train	Feature	Traditional SAP Training
Hands-on, interactive simulations	Training Method	Watching demos, reading manuals
70%+ retention (Active learning)	Knowledge Retention	30-40% retention (Passive learning)
Eliminates mistakes before employees use live systems	Error Reduction	Errors happen during real work, leading to costly fixes
High - Immersive, interactive learning	Engagement	Low - Theoretical & one-way training
Faster learning curve - Employees become proficient quicker	Onboarding Speed	Slow learning curve - More time needed to get up to speed
Train global teams instantly & efficiently	Scalability	Requires more resources & coordination
Reduces retraining & support costs	Cost Savings	Higher costs due to repeated training & live system errors

### Why Assima Train Delivers Better Results?



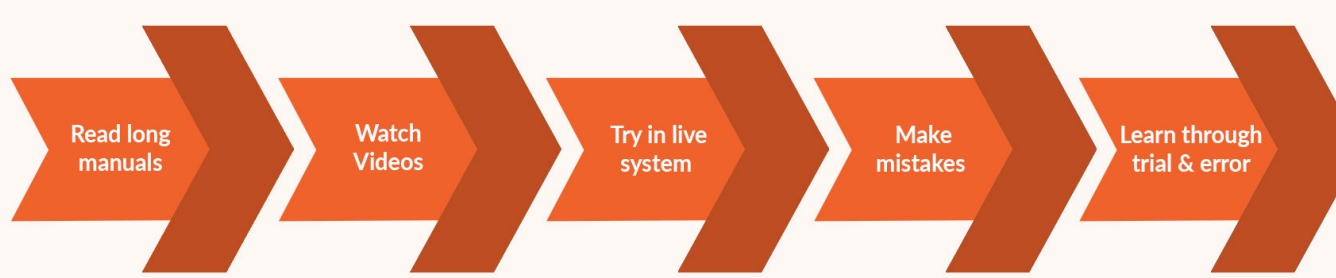
#### Real Data on Training Effectiveness



### Learning Journey: Before vs After Assima Train



#### The traditional SAP Training Journey



#### Assima Train Learning Journey

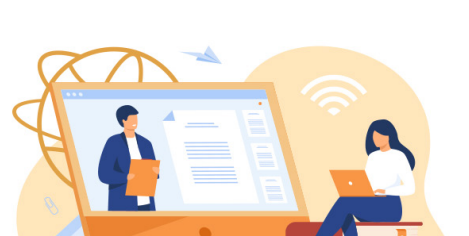


#### What Does This Mean for Your Business?

##### With Assima Train, you get:

- ✓ **Faster employee onboarding:** SAP users become proficient in record time
- ✓ **Fewer errors in live systems:** Reduce risks and costly mistakes
- ✓ **Higher engagement & retention:** Interactive training delivers better results
- ✓ **Significant cost savings:** Minimize retraining and support costs

### Why Assima Train Stands Out Among SAP Training Solutions?



Feature	Assima Train	SAP Enable Now (SEN)
Training Environment	Offers hyper-realistic, interactive simulations that mirror SAP operations, allowing users to practice in a risk-free setting.	Provides standard simulation and documentation tools but may require a live SAP environment for content creation.
Content Creation Flexibility	Enables content creation without needing access to a live SAP environment, streamlining the development process.	Typically requires a live system for recording simulations, which can delay content development.
Maintainability	High Simulating multi-step processes only requires a single capture exponentially reducing the number of screens to maintain. Objects can be edited and replaced across lessons in minutes.	Low For every update, you have to recapture screens by re-recording entire process flows from scratch, drastically increasing training costs and TCO.

## Upgrade your SAP training with Assima Train!



Empower your workforce, reduce errors, and accelerate learning. Learn more at [www.assimasolutions.com](http://www.assimasolutions.com)