
Discover Assima Train: The World's Only 4x Patented Software Cloning Technology

Introduction

[Systems training](#) has always been a major concern for every organisations worldwide. The more effectively and efficiently you train your employees, the higher ROI you achieve in every department of the organisation. However, finding the right tools and resources can be tough, especially if the needs of your company are not well-defined and clearly specified. However, with the right instruments, you can bring significant improvements in the manner your employees and colleagues are trained. A well-trained employee can be much more valuable and loyal to their employer than an ill-trained one. [HR Dive](#) reports that 45% of employees are more likely to stay with their current employer if given sufficient opportunities for skills training.

However, going about training employees cannot be a disorganised, random act. After all, 68% of employees express their preference for training at the workplace, according to [Research.com](#). And they do not expect it to be done without prioritisation. Gogi Anand, senior people science consultant at LinkedIn, [says](#),

Employees expect opportunities to learn and grow without limitations, managers who understand individual working styles and environments, and companies that offer flexibility as a standard of employment.

~ Gogi Anand

We at Assima believe that [Assima Train](#) is the most optimum way to [train employees](#) and end-users in adopting and expertly using any software application. It is equipped with multiple features that make it the right choice not only for you as an L&D leader or senior decision-maker but also for your employees. Our four-time patented software cloning technology creates hyper-realistic and interactive software simulations that can be used for training in a safe and compliant manner. We take into account the preferences and requirements of the learners and ensure that they get to train in exactly the right method for them.

Learn more about how Assima Train works and how it would benefit your organisation.

[Book a Demo](#)

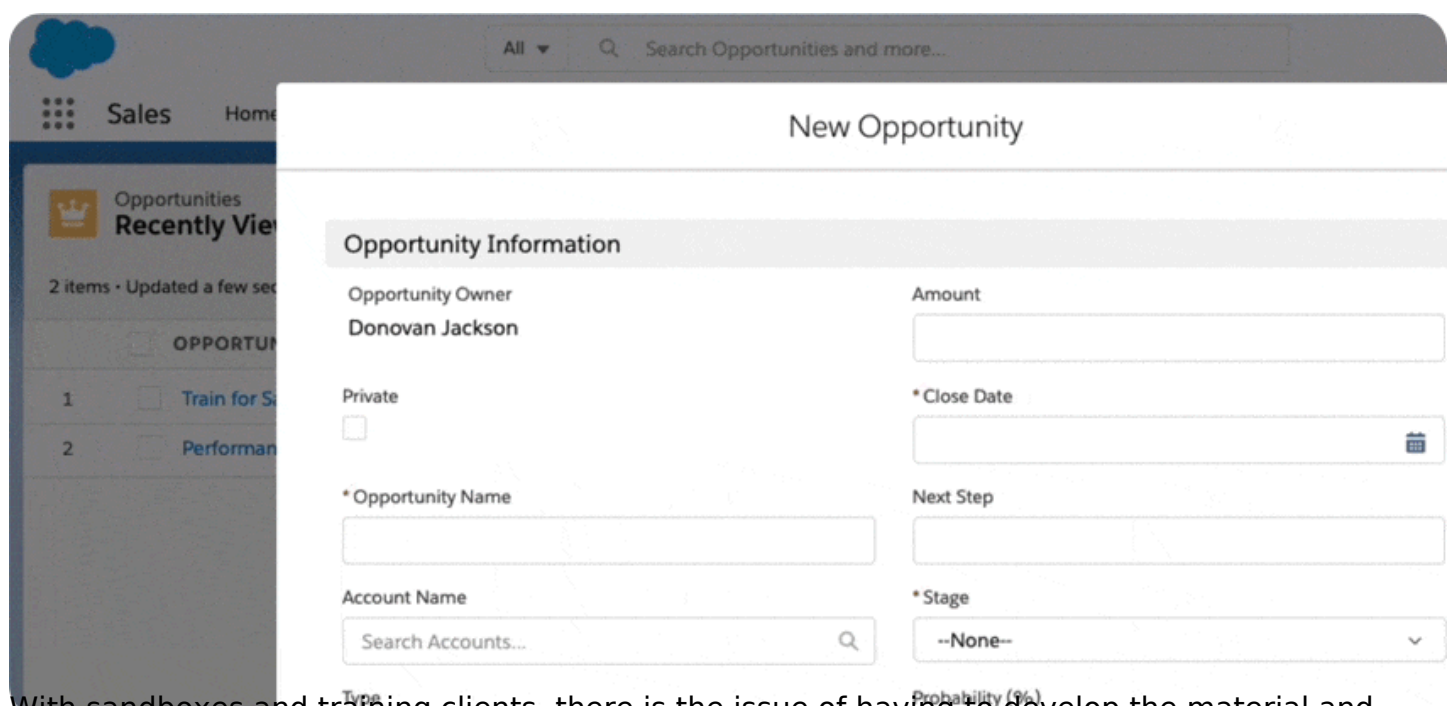
What is Assima's Patented Software Cloning Technology?

Most digital training software utilises simple technology like static screen captures and in-app guides to provide enterprise software training. However, such training solutions have limited capabilities. Even sandboxes and training clients are often not the best option—they come with set-up, data creation and modification, maintenance, accuracy, and myriad other issues. However, Assima's cloning technology was developed with the aim of resolving these problems. Assima uses a [4x patented software cloning technology](#) that redefines what training simulation software should be. When we were developing our software, the one thing we kept in mind was that digital transformation comes with a lot of challenges. One of them is the fact that people

seldom learn in a productive and useful manner when simply provided with a bunch of lessons to be memorised and utilised later on to perform a task. The reason practical lessons exist is that people have always been able to retain knowledge better when they are able to apply it instantaneously to the task they are training for. Now, using the actual application for this purpose can have risks. Not only can the learner, who has zero or limited knowledge of its usage, mess up some function and cause the company unseen trouble, but they may also end up viewing data that they should not be able to access.

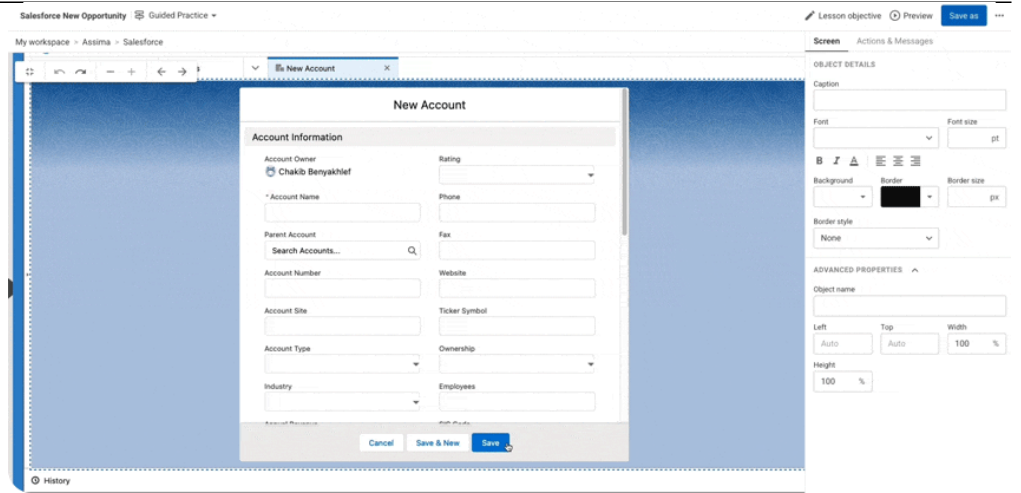
With Assima systems training platform, these risks are completely bypassed and here's how:

- You can create completely operable simulations of the application you captured. These simulations are hyper-realistic replicas of the app and allow the learner to have an accurate learning experience. You are able to apply the knowledge gained right then and there, and hence, retain the knowledge better through practice.
- With one-click data anonymisation, all sensitive information is instantly modified and made presentable to the learners without any data security and compliance risks. You do not have to create usable data from scratch, saving a lot of time and effort.

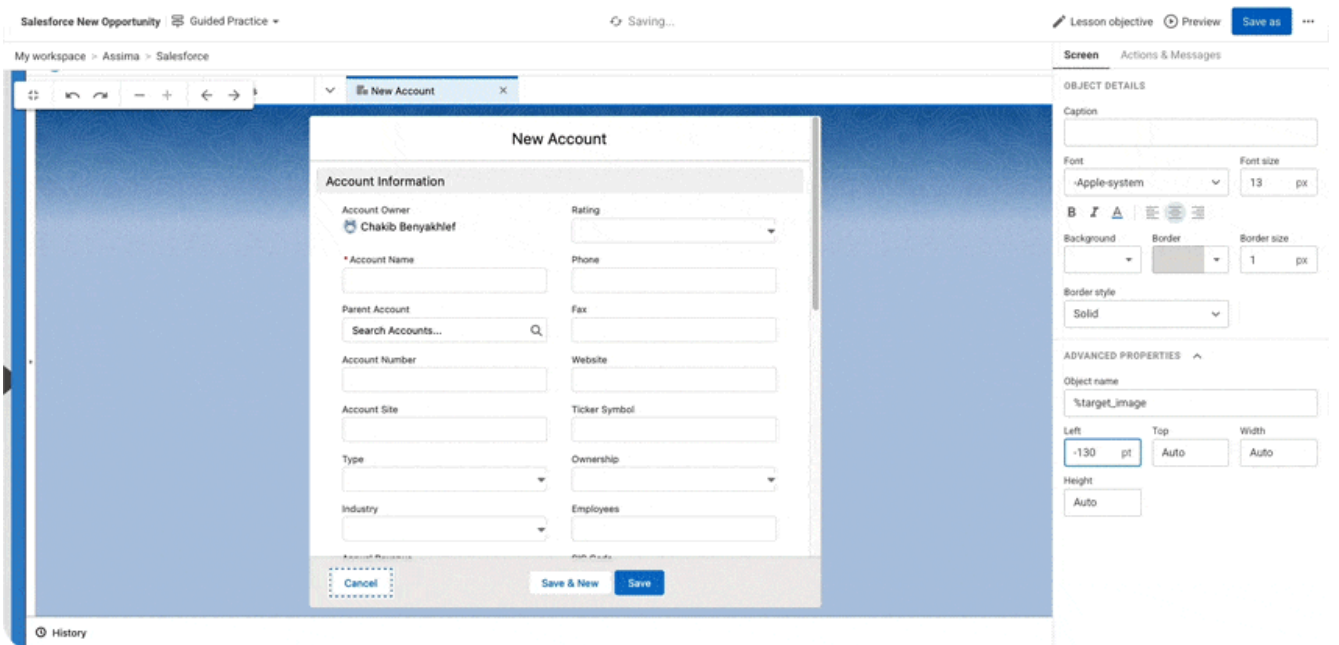
The image shows a screenshot of a web application interface for creating a new opportunity. The top navigation bar includes a search bar with the text "Search Opportunities and more...". Below the navigation, the page title is "New Opportunity". The main content area is a form titled "Opportunity Information". The form fields are arranged in two columns. The left column contains: "Opportunity Owner" (Donovan Jackson), "Private" (checkbox), "* Opportunity Name" (text input), and "Account Name" (search input with "Search Accounts..." placeholder). The right column contains: "Amount" (text input), "* Close Date" (calendar input), "Next Step" (text input), and "* Stage" (dropdown menu with "--None--" selected). At the bottom of the form, there are labels for "Type" and "Probability (%)".

With sandboxes and training clients, there is the issue of having to develop the material and maintain it from the ground up. Moreover, if you want to localise the content, you will have to translate entire text portions individually. Assima resolves this problem easily in the following ways:

- With its [revolutionary cloning technology](#), you can capture the comprehensive operation of the application in the form of completely editable objects. You can add, edit, replace, modify and remove any of these objects on the captured screen. This makes it much easier to create the training platform than if you had to program them from the beginning every time.



- For the very same reason, it is extremely easy to maintain the training lessons too. When the system is updated, there is no need to have to recapture your training material every time, like screenshot-based tools. Screens can be edited without the need to open paint, and therefore changes can be applied quicker and in some cases before the live system is updated.



- Translating the lessons to a different language is also a simple process. With our powerful technology, not only the messages but also the screens can be translated using system dictionaries. This is key as it means one set of learning materials can be made available in multiple languages without having to re-record for each language required. No more duplicating content per language required using your screenshot-based solution.

Here's how we do it.

[Watch Now](#)

It is also important to note another immense advantage that these features impart. Even if your software application is still in development or an update is on the way, you can make the required changes in the captured lesson yourself and train your employees on using the software before it even rolls out. This helps you make your workforce digitally ready in time so they can start operation as soon as the application is released.

Unique Features of Assima Train

Most software adoption tools do not have the capacity to provide all-around support from the learning stage to the application stage. They only assist you during one phase of training. However, Assima is an advanced platform that revolutionises systems training due to its ability to support the learner from pre-system go-live all the way through to post go-live support in the live application. Not only that but it also has several benefits specifically for the content developers, designers and technical staff responsible for maintaining content. The unique features that set Assima apart from its competitors include:

4X Patented Technology

Assima's cutting-edge training solutions are possible due to its 4x patented software cloning technology. Whether it be our true-to-life screen copy, flexible display screen manipulation or automatic software simulation regrabbing, every technology we use for Assima Train helps make training content development as well as lesson learning as streamlined as possible for training content creators and learners respectively.

Easy Content Maintenance

Assima allows complete object-level editing of all its screen captured lessons so that you can modify any lesson easily without having to rework them from scratch. This makes it extremely easy for the content creators to maintain the learning materials and update them when necessary. These changes are reflected across screens so that every lesson does not have to be worked on individually.

Effortless Lesson Translation

Assima makes it easy to localize lessons with its easy translation features. Be it the user interface, instructions, or content data, it can be translated to any Windows-supported language without having to re-record the entire lesson from the beginning or manually translating each piece of text individually. This makes it far more time and cost-effective to release training systems internationally.

Instant Data Anonymization

When recording screens and processes for creating lessons, often, sensitive data can get exposed to learners who are not supposed to have access to them. This will violate data security and privacy policies. But with Assima, you can quickly modify sensitive PHI/PII data with risk-free data and maintain compliance laws and policies with minimum effort.

Multiple Datasets from a Single Source

With Assima, you do not need to update your lessons every time for different departments or roles, policies, or software versions. Multiple versions of the lesson or datasets can be created from the same source without reworking them from the beginning or recreating the entire lesson. This allows for faster and easier deployment of training throughout the organization.

Detailed Tracking and Analytics

Any activity is useful and improvable only when you know how it is working. And the only way to find that out is through actionable results. Assima allows you to track content usage and

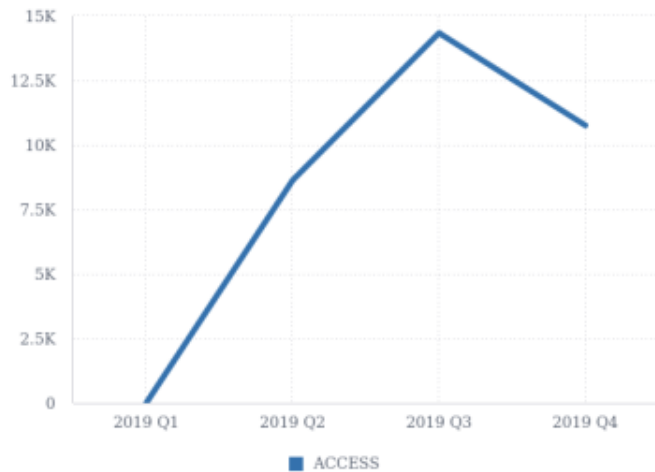
progress of every learner down to a single click and even in real-time, allowing you to view granular results for each of your employees. Accordingly, you can modify and refine the content to better suit the needs of your learners.

ACTIVITY REPORT
Source: Reports_DatabaseModel

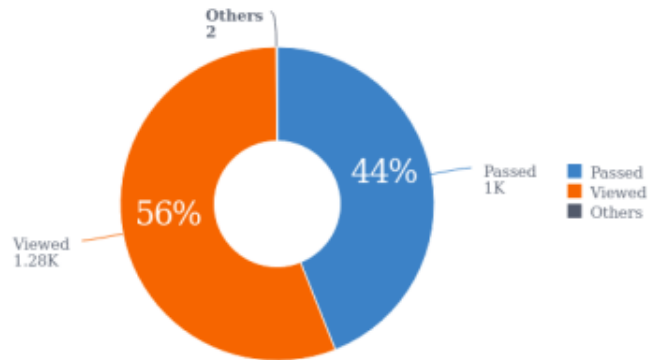
TIME FILTER

- This Week
- This Month
- Last Month
- This Quarter
- Last Year

ACCESS BY DATE



USERS PERFORMANCE



TOTAL USERS ON THE PLATFORM

TOTAL USERS
30,067

TOTAL NUMBER OF USERS

USERS
2,314

GRID

USER ID	NAME	SURNAME	LOCATION	SPOKEN LANGUAGES	LAST ACCESS	COMPLETED	VIEWS	AC
10049	Performance	Content Author	London	English (United Kingdom)	20,191,209,164,011	11	11	
10075	Myrna	Aaron	London	English (United Kingdom)	20,191,209,163,403	9	9	
10093	Lopez	Aaron	London	English (United Kingdom)	20,191,205,202,138	9	9	
10127	Bonnie	Abadie	London	English (United Kingdom)	20,191,210,145,212	5	5	
10210	Edward	Acosta	London	English (United Kingdom)	20,191,210,203,704	5	5	
10469	Elizabeth	Aguilar	London	English (United Kingdom)	20,191,210,153,234	5	5	
1000	Admin	admin	London	English (United Kingdom)	20,190,920,181,824	4	4	
10081	Walter	Aaron	London	English (United Kingdom)	20,191,210,202,403	4	4	
10098	Schweitzer	Aaron	London	English (United Kingdom)	20,191,210,202,726	4	4	
10108	Lonerjan	Aaron	London	English (United Kingdom)	20,191,210,202,942	4	4	

« < 1 2 3 4 5 6 7 > »

Rows 1-10 | 2,314 total

Multiple Output Modes from One Source

Assima Train allows you to develop lessons in one format and make it available in multiple different output modes. You can provide self-paced learning, instructor-led virtual training, blended learning, interactive learning, sandbox mode, and evaluation. Moreover, process documentation with alternative paths is created instantly. Lessons can also be deployed on any OS or browser.

Benefits of Assima Train for Enterprises

Digital transformation can be a tough task for enterprises with a huge workforce. The diversity of learners would be too great to utilise a one-size-fits-all plan but producing and employing individually tailored lessons would be too great an effort. However, automating the entire process with innovative systems training solutions can help bring the desired level of personalisation, cut the expenditure of resources while also providing the expected results on time.

Reduced Training Costs

Assima Train revolutionises systems training by completely eliminating the need to create and maintain training clients and sandboxes. However, it does not simply use pre-recorded videos or screenshots to simplify the process. With Assima's 4x patented software cloning technology, you can create hyper-realistic simulations without spending a lot of money, resources, effort or time. While the upfront cost may seem higher than most of our competitors, our advanced platform with unique features makes up for it in the long run with a much higher ROI than our competitors. Typically, Assima clients achieve a 10:1 ROI over a period of 5 years when compared to using comprehensive training environments supporting multiple applications in multiple locations on a global scale, as reported by [Learning News](#).

Increased Productivity

Assima Train does not disrupt the usual workflow of your workplace when creating training materials or deploying them. The original application keeps running as usual while you create the object-based screen captures. Any changes you make to the materials, be it the copied interface or the data, are not reflected in the actual software, so you can even train employees in upcoming updates without disturbing the operations of the original system. Moreover, by training employees in a realistic simulation, you ensure that they learn and retain any information about the working of the app to a high degree, allowing them to apply that knowledge accurately and make minimum mistakes when working on the real software application.



Improved Employee Retention

After record worker attrition till 2018 that was predicted to continue into 2019 and further, LinkedIn, in its 2019 [Workforce Learning Report](#) reported from its survey that 94% of employees would stay longer at a company if it invested in helping them learn and train more. It is quite clear by 2024 that the organisations that invested in thoughtful learning plans retained more employees than the ones that did not. Assima Train provides a constructive avenue for employees to learn and grow in their workplace. When workers are able to improve their knowledge and skillset, they not only feel more confident when working but also have a greater chance for career advancement. They also feel more supported in their workplace. All these factors contribute to better employee retention.

Accelerated Software Adoption

The main aim of digital adoption platforms like Assima Train is to provide people with a favourable learning environment that enhances their experience and helps them learn better. With just-in-time training, multiple learning modes and adjustable lesson sizes, employees find it convenient to learn using digital training software like Assima Train. Moreover, as [Research.com](#) reveals, 70% of employees feel that simulation training is a highly useful tool that often goes severely overlooked and under-utilised. Assima Train can help you overcome that hurdle and incorporate simulation training modalities into your L&D arsenal, ensuring accelerated software adoption and confident usage.

Do you feel we would be a good fit for you?

[Let's Talk](#)

Use Cases

Assima Train and its sister products like [Assist](#) and [In-App Search](#) are used widely in various industries across the world. Be it healthcare or finance, retail or [manufacturing](#), [software companies](#) or [telecommunications](#) or even the government sector, we are present in all the major sectors that run the world. Let us discuss three of the areas where we have had the most impact over the past two decades.

Healthcare

[Healthcare](#) is a highly regulated as well as fast-moving industry. There is little scope for errors or disruption in this field. The following features of Assima Train are especially beneficial for medical use:

- Assima Train can work without causing any interference to the main application or operational flow. This is important as health issues will not wait for technical issues to be sorted.
- The feature of easy data anonymisation helps keep sensitive PHI hidden while still allowing employees to work on usable datasets.
- Any updates to compliance and regulation in the main system will automatically reflect in the simulated systems. If you are still getting the actual application ready, you can specify new rules in the simulations even before that to help train your employees by the time the app/update is released.
- With performance support tools and on-the-job overlay assistance, the chances of making mistakes are reduced manifold. This is a major advantage for healthcare providers, where even a minor error can have immense repercussions.

When Zuyderland MC in Heerlen, Netherlands wanted to deploy SAP as its primary nursing app across four hospitals and 2500-strong staff, they needed a solution that could take on the challenges of minimum disruption and lack of time (it was calculated that the nurses would need a minimum of 7 days to be workplace-ready) and still deliver results that live up to the high expectations and standards of the medical field. With Assima Train, they were able to cut training time and costs by 50% while effectively training every staff who had to use the software.

[Read more about Zuyderland MC's transformation here.](#)

[Read Now](#)

Finance

Just like healthcare, [finance](#) is a strictly regulated field too. Moreover, with the rise of personalised customer services, the number of executives handling customer-facing roles has increased manifold. So, the need to prepare them to use digital technology for handling customer data has also expanded. More importantly, in a domain with constant data interactions and movement, having trained staff who can handle any situation with grace and calmness is essential.

A common challenge that many organisations in the financial sector commonly seek to

overcome is to replace complicated and lengthy traditional processes with fast, digitally supported programs. There are often multiple paths to follow based on each action and data entry provided, that the user must know by heart. Training for that requires one to work extensively on the live system or a replication of the live system to become accustomed to all possible scenarios. Even after that, it is preferable to receive in-app support on the live system to reduce the risks of mistakes.

When a major Canadian bank was trying to optimise its lengthy, 11-step mortgage application process by migrating to a SAP CRM application within a tight schedule, they chose Assima to assist in training their 3000+ strong staff. The results they observed with Assima Train were phenomenal. Not only were they able to stick to their challenging timeline but they also saved \$3 million in training costs and trained their employees to work with confidence on the new system.

Learn more about how we achieved it here.

[Read Now](#)

Retail

With [retail](#), diversity is always the biggest challenge. When retail chains introduce new technology, they must provide the training across all their intended locations, keeping in mind various factors like language requirements, learning preferences and technical limitations. The training must also be provided so as not to eat into the already stretched working hours of the staff. The training process must also be economised to save money and time.

On a more technical note, protecting PII is a major concern for these companies. With the personal and financial details of millions of customers on the line, one must ensure that these are not accidentally revealed while training. Besides compliance, enterprises must also maintain a high level of agility and dish out updates seamlessly wherever and whenever necessary.

When a Dutch discount store chain wanted to switch to SAP Logistics across its 600 outlets, Assima Train was a no-brainer for them. With speed, efficiency and diversity being critical factors in this deployment, they needed an ERP training software that could effect multi-level changes across training materials within seconds. Using Assima, they not only reduced costs by \$600,000 but also made the application live in record time with the entire workforce being fully work-ready for it.

Here's how we accomplished it.

[Read Now](#)

Assima vs. Competitors

One of the biggest differences you will observe between Assima and its competitors in the same domain is that most of them focus on providing in-app support, workflow automation and learning acceleration through self-service facilitation. However, very few systems training solutions provide an advanced platform that can capture hyper-realistic simulations using software cloning technology. More importantly, you will get to see even fewer simulation authoring tools that create completely editable, object-based simulations that allow free and flexible modifications across lessons while also providing a highly granular level of

personalisation and analytics.

Assima is exclusively an ERP training software, which means it is optimised to capture the nuances of software used in professional settings and provide them in a manner that is convenient to employees. In regard to the latter, features like just-in-time training, microlearning, lifelike interactive simulations for app-accurate training and activity documentation are the most important features that we highlight. For content creators, complete lesson customisation, data sanitisation, lesson translation, one-step screen capture, multiple output modes and multiple dataset creation are highly useful features to take advantage of. As an L&D manager or team lead, you can track the progress of your team members using an actionable insights dashboard and lesson personalisation. No other systems training platform provider has as many directed features as Assima Train does.

Conclusion

If you are looking for a software adoption tool for training your employees in a timely and cost-effective manner while ensuring results of the highest grade without interrupting your daily workflow, Assima Train is the way to go. We are a highly niche platform provider geared towards high-volume enterprises for which a lot is at stake at every point. If you want to explore our offerings further, simply apply for a personalised demo for you.

[Book a Demo](#)