
Cut SAP Training Costs & Boost Efficiency with Assima Train

Introduction

Most organizations operating at a wide level usually utilize some kind of [ERP software](#). One of the most commonly used platforms is SAP, due to its wide range of functionality. However, SAP does come with certain concerns. For one, SAP implementation itself is quite costly. On top of that, training employees in SAP adds to that cost. While you can always teach yourself for free, that has limitations. Doing a course and getting a certification puts an official stamp on your SAP knowledge and skills.



Moreover, if you try to cut costs and deploy SAP but do not provide sufficient training to the users, [you will incur significant secondary and hidden costs that will incur a higher expense than what you would have spent on a full-fledged training program](#). The wiser course of action is to invest in quality training so that you can reap the returns of your SAP investment. However,

there are ways to economize your training plan without compromising on quality. The best way to do that is to choose a training solution that has a high [ROI](#). Finding such a cost-effective [SAP training](#) solution may be difficult but it is not impossible. For example, you can easily reduce SAP training costs with Assima Train. We offer an innovative solution that saves you thousands of dollars in the long run while providing highly effective SAP training.

Assima is the best choice for enterprise SAP training in a budget while maintaining high quality of training. Here's how we accomplish that

[READ NOW](#)

Financial Challenges of Traditional SAP Training

Traditional SAP training comes with a range of issues when considering the financial aspect. These include:

High Costs of SAP Training Programs

[Traditional SAP training programs cost more](#) due to the need for specialized instructors, the expansive curriculum, certification expenses, and more. Moreover, you have to offer regular refresher courses, which creates a continuing expense. On top of that, you will need to hire content developers to maintain the training materials, LMS operators to deliver them, and IT staff for miscellaneous technical requirements too.

Expensive Sandbox Environments

Most traditional SAP training programs employ sandboxes to provide practical experience. Sandboxes are basically virtual training environments with their own version of the application as well as dummy data for learners to practice their skills on. However, [sandboxes come with certain limitations](#), including a high expense trail. Using them only increases the cost of providing comprehensive SAP training.

Financial Challenges of Traditional SAP Training

High Costs of SAP Training Programs



Expensive Sandbox Environments



Extended Employee Onboarding Time



Greater Chances of Costly Errors



Lack of Engagement in Traditional Training



Extended Employee Onboarding Time

SAP is a complex software solution to learn and master due to its wide range of features, modules, and functionalities. This naturally means that it will take longer for employees to get properly settled and start working with confidence on the live system. The overall onboarding time gets extended as a result. With the basic operational costs calculated daily, it increases the onboarding costs significantly.

Greater Chances of Costly Errors

Traditional SAP training is limited in its scope and effectiveness. It is only able to train employees to a certain level, after which, the only option is to self-practice and improve one's skills to a point where you can confidently operate the live SAP system. Working on the live system in the beginning is obviously fraught with the risk of human errors disrupting the business operations or introducing inaccuracies in the business data.

Lack of Engagement in Traditional Training

Lack of engagement, be it at work or in training, is a major hidden cost that most companies fail to realize. If employees are not engaged enough during training, their knowledge retention and recall will drop significantly. Traditional SAP training is not geared to hold learner attention in the same way as modern training methods. Hence, the gaps created in the learners' knowledge ends up incurring losses in the form of reduced or negative ROI.

Find out more about how Assima fares better than traditional training methods in overcoming SAP training challenges.

[READ NOW](#)

How Assima Train Reduces SAP Training Costs

[Assima Train](#) boasts a range of innovative features to help improve the quality of training in workplaces. If you want to reduce SAP training costs with Assima Train, read about these features in detail so you can leverage them when considering SAP training budget optimization for your own organization:

Eliminates Sandbox Costs

As we explained before, sandbox training not only requires a lot of resources and effort to maintain but is also a cost-intensive training method. Eliminating sandboxes reduces these costs significantly, but the downside is that you lose a well-established procedure to provide hands-on SAP training. However, there's nothing to worry about as Assima brings you the best alternative to SAP sandbox training. You can still provide [hands-on SAP training without a sandbox by using Assima simulations](#). Using a [4X patented cloning technology](#), you can create hyper-realistic clones of the SAP application on which employees can practice in a safe, regulated manner.

<https://youtu.be/cTGRjupj9k8>

Easier Maintenance and Upgrades

[Assima clones are object-based, making them fully editable at every level](#). You can edit any part of the captured screen, copy and move them, mass-apply changes, multiple outputs from the original capture without any rework for individual versions, [anonymize data](#), and create various lesson modes. All of this can be done without compromising on the [realism or interactivity of the simulations, which are essential to ensure learner engagement and knowledge accuracy](#). It also means you can modify the simulations to reflect software upgrades to train your employees before even the official rollout, allowing SAP onboarding cost reduction.

Faster Onboarding & Productivity

SAP training efficiency with Assima is proven to be higher than that with sandboxes. This is because not only do employees perform better on the live system after learning through Assima but the training and onboarding time is also cut down significantly. Assima lowers the learning curve for SAP in a way that trainees can get to work with confidence much faster than if they utilized sandboxes. By reducing the onboarding time, you reduce training and operational costs as well. Moreover, with employee performance levels at par with expectations right from the start, there is no loss in productivity at the start of onboarding either.

Scalable & Cost-Effective

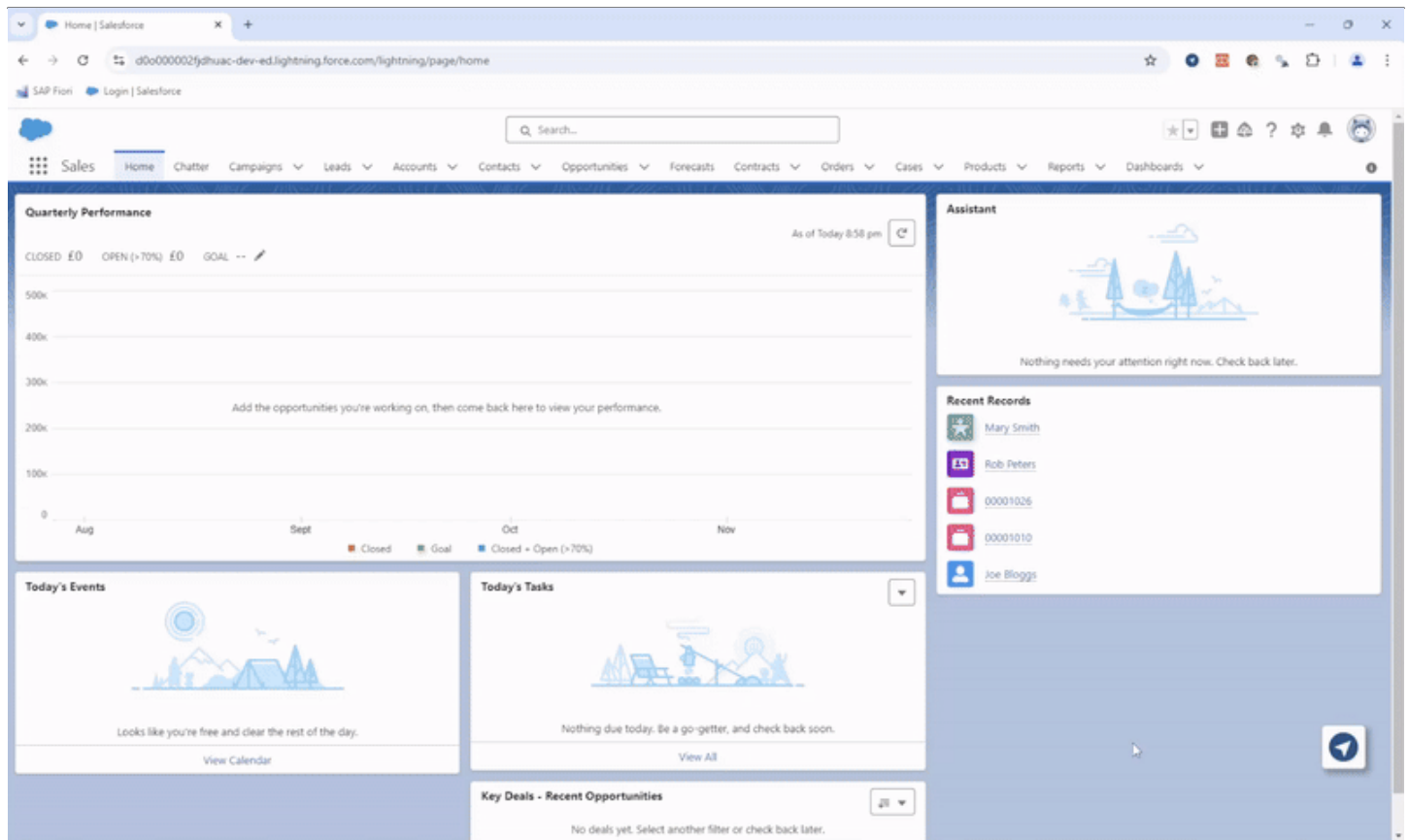
Assima is the true definition of a scalable SAP training solution. You can deploy training on multiple systems and sustainably train multiple users simultaneously. You can create multiple datasets, [create translations in any language used in workplaces across the world](#), and [deliver training remotely to a global workforce](#). With these facilities, you do not have to make employees travel to a single office from across countries for training or send instructors to every location, drastically reducing travel and accommodation costs. As a result, you can make your training truly scalable without additional reinforcements.

Reduces Errors & Downtime Costs

Simulation-based SAP learning is the best way to give learners a hands-on training experience. Assima provides [interactive, scenario-based training](#) which, as we explained before, improves retention and recall due to the experiential nature of the learning method. As a result, the number and frequency of errors in the work of the trainees is reduced manifold when they start working on the live system. Expenses incurred to correct disruptions in the system due to such errors and the loss of productivity from the downtime resulting from these errors can be eliminated simply by using simulation training by Assima.

Real-Time, In-Application Training

Apart from simulation training before go live, Assima also has [In-App Search](#) which provides in-app information search and guidance. This digital tool acts on top of the SAP platform, providing real-time assistance which further reduces the chances of making mistakes and boosts your employees' confidence from day one. [Assima Train](#) and [In-App Search](#) go hand-in-hand as the most learner-friendly enterprise SAP training solutions. You don't have to buy expensive external courses anymore - you can create your own materials with Train and then provide post-go live support using In-App Search.



Case Study: Cost Savings with Assima Train

When a top Dutch discount retail store chain transitioned to SAP Logistics across all its locations, it needed a training solution that could be used to effectively train thousands of staff across multiple countries and in multiple languages. They chose Assima to help train for such a mission-critical part of their operations. In the process, they streamlined the onboarding procedure and reduced how much time it took, cut down training costs by \$600,000, and improved in-app intelligence. [All of this was made possible by Assima and here's how.](#)

Zuyderland MC in Heerlen in the Netherlands operates 4 hospitals and needed to roll out SAP for its nursing staff without disrupting patient care at any point or reducing the on-call hours of the nurses in a way that would affect the hospital operations. With Assima, they not only reduced the number of hours of classroom training needed by half but also saved training costs, made the SAP migration smooth and hurdle-free, and kept all patient information fully protected as it should be. [Assima was the reason for such benefits and this was how we did it.](#)

Why Assima Train is the Best Choice for SAP Training Cost Reduction

If you want to minimize SAP training expenses without lowering the training quality, you must choose a training solution that either perfectly aligns with your requirements or one that can be customized to suit your needs. It is always a better choice to go with the latter for one simple reason – business needs evolve, and with that, your employee training needs too. It is illogical to keep jumping from one systems training platform to another or adjust your training program to it. Either scenario will cost you – either through additional expenses or through unnecessary losses.

This is where Assima truly makes for a cost-effective SAP training solution. Since you create your training materials from scratch by mirroring the exact software environment you have but with less than half the effort and resources needed to create and maintain sandboxes, you save not just in the obvious manner but in many hidden ways too. We help reduce training and onboarding time, the time and effort needed to create and maintain training materials, to scale the scope of the training program, and to update the materials for software upgrades.

You also diminish the probability of human errors and boost user confidence, reduce employee resistance to [digital transformation through SAP](#), and create a healthy working environment, all of which prevent the loss in productivity companies often face at the beginning of software adoption or migration. Thus, Assima helps reduce SAP training costs not only in the training phase but also in the preceding and following phases.

Conclusion

SAP is a costly software solution to deploy as well as train in. It always helps if you are able to economize the process, even to a small degree. However, this can be difficult if you do not know where to start. If you are looking for a training solution that will not only elevate the quality of your training program but also help you save money, you are in the right place. Assima brings you the most economical and sustainable method to train employees in the usage of SAP without any decrease in effectiveness or efficiency. So, what are you waiting for? Reduce SAP training costs with Assima Train today!

Want to know how you can reduce SAP training costs with Assima Train? Find out how this leading energy company did it.

[WATCH NOW](#)