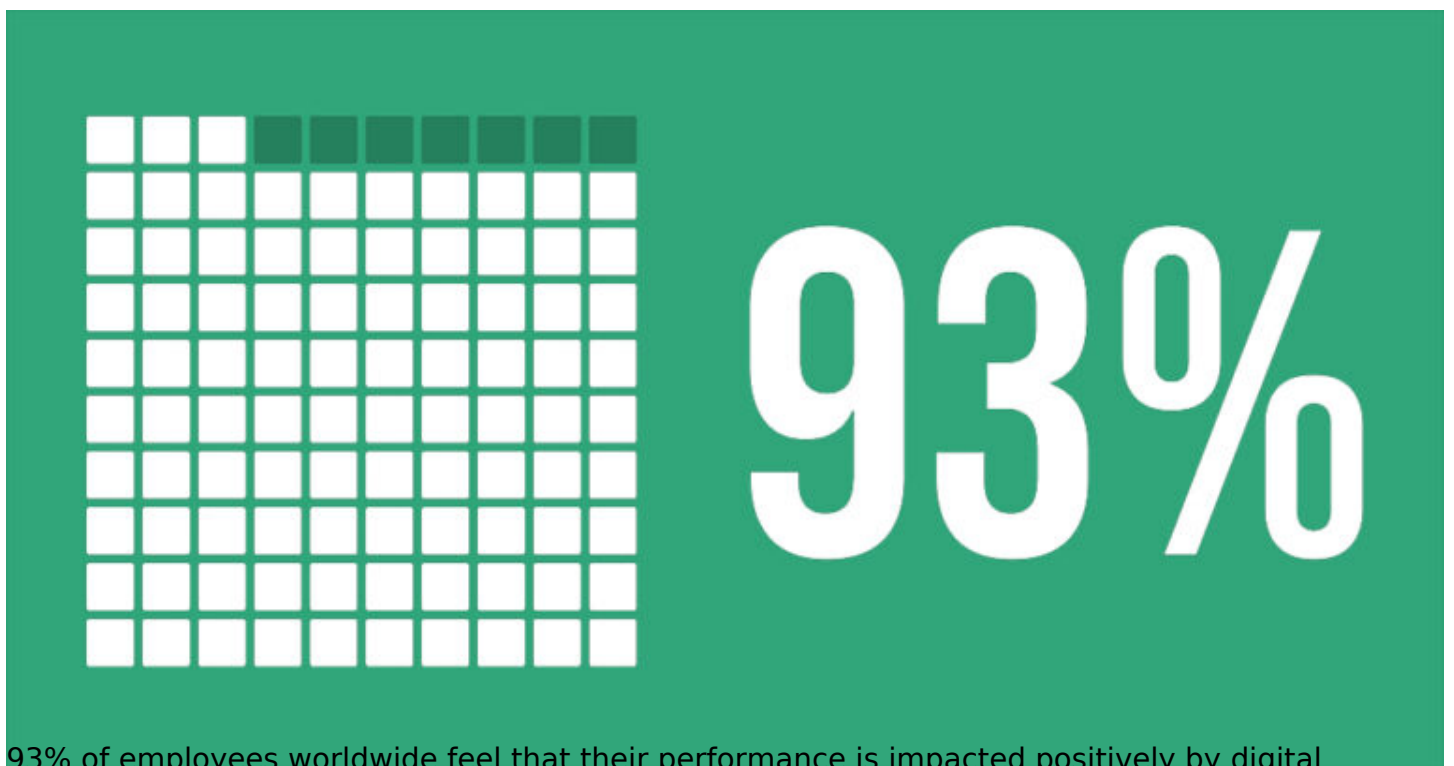


---

# Comparing Top Digital Adoption Tools: A Deep Dive into Enterprise Training Solutions

## Introduction

[Digital adoption](#) has become imperative nowadays to keep up with the speed at which global corporate operations are running. You need to be able to get large processes done with just a few clicks and inputs. You need to have complete visibility of all relevant information at all times. And most importantly, you must be able to maintain the most efficient and streamlined approach for every operation. All of this would not be possible without adopting the latest technology. According to [MIT Sloan Management Review 2021](#), 93% of employees across industries and locations themselves agree that being digitally adept is a necessity for good performance at their jobs.



93% of employees worldwide feel that their performance is impacted positively by digital expertise.

However, the rate of digital adoption is not at par with this statistic. Among several factors, using the wrong digital adoption platform for your organization and workforce is a major one. If your target user base and the DAP are not a good fit, no matter how well-planned your training program is, it will fail. Today, we will compare several digital adoption tools alongside [Assima Train](#) to analyze their features, suitable use cases, and pros and cons, in order to determine which one is the best fit for your company.

**Learn more about what a digital adoption platform does to aid your digital transformation process.**

[READ MORE](#)

# Why Digital Adoption Tools Matter for Enterprises

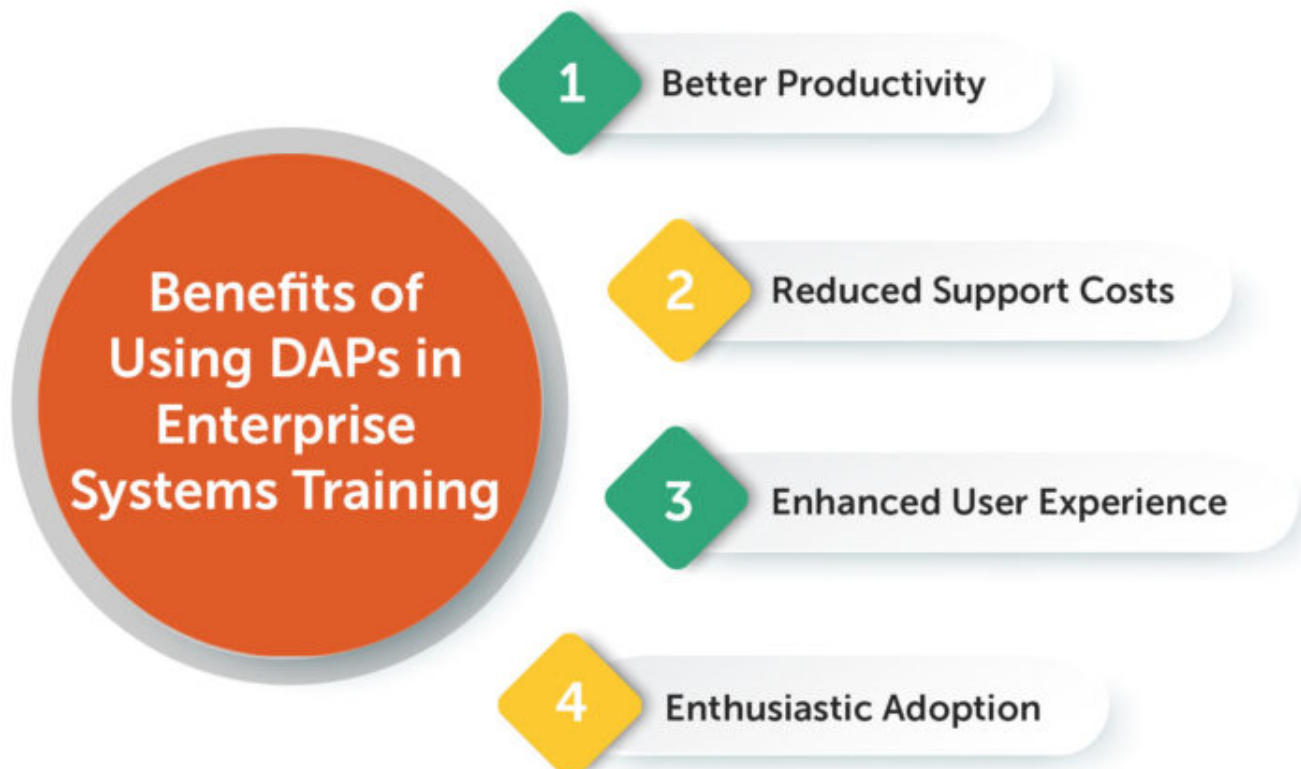
Just as the method of a process plays a huge part in its success, so does the instrument. If you choose the wrong platform for software adoption, no matter how much effort you put into designing and implementing the perfect training program, it is bound to fail. Without the right tools, you will face issues like:

- Significant delays in onboarding
- Higher software drop rate
- Reduction in productivity
- Greater errors in the live system
- User resistance and demotivation

However, if you successfully find the right tool for your enterprise digital training plan, you will reap many benefits including:

## Better Productivity

When users learn to use digital technology on a platform that properly supports their needs and preferences and keeps in mind their training goals, the results are bound to reflect it. Employees will be more skilled in using the new application with less fear of errors and more confidence in their expertise.



## Reduced Support Costs

Since employees trained on suitable user adoption platforms are less likely to have doubts and

---

inquiries about how to operate the software, there will be fewer tickets and calls to the helpdesk. This significantly reduces both the seen and unseen costs of [over-dependence on external support](#) to operate the office.

## Enhanced User Experience

People only enjoy using objects that they understand how to use. The same goes for software. When employees are well-trained in the use of effective digital adoption tools, they are naturally more motivated to use digital technology. Being digitally knowledgeable also means they understand first-hand how technology is making their lives easier, which is gratifying.

## Enthusiastic Adoption

A digital transformation plan is ultimately a failure if the target user base does not accept and adopt it enthusiastically. And the only way to make that happen is with a digital adoption program that trains them using effective onboarding solutions.

## Key Features to Look for in a Digital Adoption Platform

Digital adoption tools are of many types. You can choose one or the other based on your needs and preferences. However, based on research and established facts, there are certain features you should look for in a [digital adoption platform](#) that we can guarantee will greatly boost your training program. Some of these include:

### Simulation-Based Learning

[Many studies have proven that simulation-based learning significantly improves the performance and productivity](#) of learners post-training. Although the best option is to find a solution that can facilitate true-to-life, [interactive simulations](#), you can still achieve great results with semi-static, hotspot-based simulations that emulate the basic interactivity of the target software.

---

## Key Features in a DAP



### Real-Time Guidance

Even when individuals believe that they have memorized the information necessary to operate an application, they may forget certain details when working on the live system. In such cases, [real-time, in-app guidance tools](#) can help reduce errors, enhance confidence, and improve work efficiency. It works as a safety net when working with live business data.

### Multilingual Support

If you are a global organization or at least have a workforce spread across multiple linguistic zones, you will need to provide training catering to all those linguistic and cultural groups. However, creating lessons for each group from scratch is illogical. The best way to proceed is to utilize a [solution that comes pre-loaded with multilingual and translational services](#).

### Analytics and Progress Tracking

No corporate process can be controlled properly without analytics, and the same goes for systems training as well. By tracking the progress of each learner and the enterprise digital training program as a whole, you not only have visibility of whether you are on track with the program as per expectations but can also pinpoint areas where you can make improvements.

### Integration Capabilities

Any software adoption assistance tool is truly useful when it has a nearly universal range of

---

compatibility with applications utilized by its target user base. If it can only integrate with a few applications, organizations would have to use multiple platforms to power the digital training capability of their workplace, making the solution a very expensive and inefficient choice.

## **Comparative Analysis of Top Digital Adoption Tools**

We will now compare a few digital adoption tools to analyze which might be the best fit for your case:

### **Assima Train**

Assima Train is a digital adoption platform that uses simulations to provide scenario-based training in a risk-free environment. It can be combined with Assima Assist, which provides in-app guidance during live app usage, and Assima In-App Search, which provides a widget for in-app self-search.

### **Unique Features:**

- 4X patented simulation technology that captures object-based clones of applications that are fully editable, hyper-realistic, and hyper-interactive
- Real-time in-app guidance that can be connected centrally to any database of content
- Multilingual support with streamlined translation facilities
- Wide-range integration capabilities for ERP, CRM, HCM, EMR/EHR, homegrown applications, legacy systems, and more
- Easy creation of multiple datasets without rework as well as quick data anonymization
- Highly granular level of analytics that tracks every action of every user
- Remote training facilities with centralized access to knowledgebases

### **Benefits:**

- Reduces IT dependency and helpdesk calls
- Enhances onboarding and software adoption
- Reduces training time and cost
- Highly customizable for different needs
- Highly scalable for a global user base

### **Limitations:**

- Lacks HR-based LMS capabilities such as enrollment and scheduling
- Longer onboarding timeline

### **Application:**

- Enterprises that require customizable, secure, and highly scalable training for their workforce
- Software companies that need to train a massive customer base, especially during upgrades and rollouts

<https://youtu.be/KMOwtAshFEk>

**Find out more about the future of simulation training and how Assima can help you turn it to reality.**

## WalkMe

WalkMe is a DAP that focuses on learning support during live system usage. It helps in streamlining workflows, identifying areas where users face roadblocks, and getting them over those obstacles quickly to prevent downtime.

### Unique Features:

- Contextual, step-by-step, in-app guidance for software usage at the point of friction and processes to help streamline the workflow
- DeepUI technology that utilizes AI to automatically adapt and improve content
- Clear visibility into the usage of every software in your organization
- Automation of repetitive or complicated tasks for faster and more efficient performance
- Preventive guidance to ensure users don't commit errors when using software or filling out forms
- Workflow accelerators, built especially for sales, HR, IT, etc. to ensure productivity and compliance without errors

### Benefits:

- Just-in-time support for users during live software use
- Reduces the chance of errors in live systems
- Enhances productivity and workflow efficiency
- Reduces time required to complete processes
- Conversational interface for user-friendliness

### Limitations:

- Higher cost for advanced features
- Less detailed analytics support
- Collaborative editing is limited
- Lacks interactive simulations for pre-go-live support
- Requires applications to be built to create content

### Application:

- Companies looking to provide support for software and AI adoption, change management, and general workflow enhancement
- Organizations that want to improve or maintain their compliance rating during live work

Click [here](#) to know more.

## Whatfix

Whatfix, as a digital adoption platform, is mainly known for its superior in-app guidance tool that supports users through the software adoption and learning phase after go-live. It aims to improve live system usage and feature discovery to optimize productivity among users.

### Unique Features:

- 
- Contextualized usage flows overlaid on live applications for guided software usage
  - Self-help widgets and smart tips for on-demand support regarding app usage
  - User analytics to identify the manner and rate of usage of software
  - Ability to create mirror environments that emulate an application for simulation learning
  - Remote training capabilities to help scale the scope of employee training
  - Wide integration options to allow universal usability

### **Benefits:**

- Technology adoption without a dip in productivity
- Lower chance of downtime with new software introduction
- Real-time guidance for reduced errors in the live system
- Immersive learning experience for faster onboarding
- AI capabilities that enforce user-centricity

### **Limitations:**

- Limited customization in complex training scenarios
- Instability in certain basic features
- Account segmentation and translation facilities are limited
- Requires an application to be fully built before content can be created

### **Application:**

- Employee onboarding, digital transformation, software adoption, and change management requirements of corporations
- User onboarding for software companies

Click [here](#) to learn more.

## **Pendo**

Pendo goes beyond being just a suite of digital adoption tools; it aims to create fantastic product experiences that will help users become familiar and comfortable with the software they are using. It is centered highly on AI to ensure intuitive operation on both the creator and learner sides.

### **Unique Features:**

- Detailed behavioral analytics for insights into user actions in relation to software usage using a massive number of data points
- Simple paths for customized, in-app guide creation to accelerate user onboarding
- A unified platform utilizing a number of tools and guides to help users with software adoption
- In-app NPS capabilities to capture more than just technical usage data
- Functionalities to capture feedback, formulate ideas, validate plans, and create data-backed roadmaps for improved user experience
- High level of data sync and app integration abilities for omnichannel access

### **Benefits:**

- Complete visibility into usage patterns
- Ability to utilize analytics data directly to create superior user experiences

- Fully AI-powered processes to reduce time and effort
- Every action led by the impact on users and centered on the product
- Proven to drive user engagement at every point

## Limitations:





- Less focus on providing guidance for software onboarding
- Search and filter capabilities are limited
- The mobile interface is tricky to use

## Application:

- User feedback collection for software usage to improve onboarding experiences
- Onboarding support for both employee and customer users

Click [here](#) to explore further.

## Side-by-Side Comparison of Digital Adoption Tools

Features	assima 	walk me 	whatfix 	pendo 
Hyper-realistic Simulations	★★★★★	-	★★★	-
Real-time In-App Guidance	★★★★★	★★★★★	★★★★★	★★
Translation & Data Modification	★★★★★	★★★★★	★★★★★	★★★★★
Analytics & Data Tracking	★★★★★	★★★★★	★★★★★	★★★★★
Integration Capabilities	★★★★★	★★★★★	★★★★★	★★
Use of AI Technology	-	★★★★★	★★★★★	★★★★★

## Why Assima Train Stands Out

While every suite of products we discussed above is admirable in its own right, what makes Assima stand out is how it chooses to aid software users before go-live to ensure that when they do work on the live system, they are completely ready and confident to operate. Mistakes are reduced, productivity is enhanced, and the workflow is streamlined.

Our unique approach to systems training lies in our [4X patented simulation authoring technology](#)

---

that lets you create object-based clones of applications. These are not duplications of the software or sandboxes but standalone hyper-realistic, hyper-interactive clones that act and react just like the application. Hence, they are much easier, cost-effective, and time-saving to maintain and update.

These clones are also [editable down to the smallest detail](#). The Assima Train platform allows [easy translation](#), multiple dataset creation, [data anonymization](#), and varied lesson format conversions, which means you do not have to recreate lessons from scratch every time a modification is needed, or a software upgrade becomes available.

Besides such a high level of flexibility, Assima enforces robust security measures. This makes it the perfect choice for enterprise digital training in large organizations and corporations. It offers the kind of scalability that global companies would need to train a diverse user base while also allowing them to maintain the stringent security standards they must uphold.

## **How to Choose the Right Digital Adoption Tool**

Now, you might be wondering, despite going through so many digital adoption tools, how you will know which is the best fit for your company. Now, the easiest way to solve this question is to compare the needs of your organization and the value a certain DAP provides against a number of metrics. This includes:

- Basic Nature and Features of the Solution and If It Fits the Nature of Training
- Budget and Time Constraints and Freedoms for the Training at Your Company
- Customizability of the Solution to Suit the Needs of Your Training Regimen
- Integration Capabilities of the Solution to Your Current Digital Environment
- Provision of Analytics Tools to Help Track the Success of the Training Program
- Scalability of the Solution vis a vis the Growth Expectations of Your Company

Of course, there will also be other finer factors that you will have to consider based on the specifics of your organization, training program, and workforce. But these are some of the basic questions you must ask at every step of choosing a software adoption platform for your organization.

## **Conclusion**

Digital adoption tools can be your best friend in making your workforce tech-ready, but only if you make your choices correctly. The wrong choice can potentially doom your entire training program. In fact, not only will it derail your onboarding plans, but it will also make your workforce even more resistant to the idea of digital transformation. While you have many digital transformation tools at your disposal, a platform as universally hailed as Assima is sure to help you reach your training goals in a way that exceeds expectations.

**If you wish to take a step into a digitally savvy future, Assima is your guide.**

[CONTACT US](#)